

# CQ *Today* Weekend

## PROPERTY

realestate  
**view**  
com.au

# FAMILY HOME WITH RESORT POOL



**SET** on a whopping 1,371m<sup>2</sup> block, this lovely 4 bedroom lowset family home has so much to offer. Inside features 4 large air conditioned bedrooms all with BIR, separate study/office space, galley style kitchen, plenty of storage, open plan living and dining.

Outside this property comes into its own. As you step outside you are greeted with your very own private tropical oasis consisting of a large outdoor entertaining area which flows out to a lovely grassed space, perfect for the kids to play under the shade of a huge Poinciana tree.

Then you come to your very own secluded resort style saltwater pool perfect for those warm summer days.

The property still keeps surprising, west of the pool the land opens up to another approximately 480m<sup>2</sup> of prime real estate with its own street access.

Currently boosting a flourishing citrus orchid, this parcel of land is perfect for a shed of any size or subdivision, the choice is yours.

Properties of this quality, this close to town and with so much to offer makes this a must see, call Troy Davis for inspection times.

Ross St is located within walking distance to the CBD, shops, schools, main beach and also home to Jacks Paddock which is a communal garden and play space open to all in the community.

Get involved or simply enjoy this wonderful community space right on your doorstep.

#### The home includes:

- 4 large bedrooms with BIRs
- Solar
- New roof
- Study/office space
- Air-conditioning throughout
- Open plan living
- Galley kitchen
- Garage
- Separate Laundry
- Garden shed
- Fully Fenced yard
- Side access to Lamberton St
- Large resort style saltwater pool
- Citrus orchid consisting of grapefruit, lychee, mango, lemonade, oranges, mandarin, banana and starfruit
- Bore - pumps 200gal/hour, perfect for water gardens
- Space for Large shed ●



## HOME ESSENTIALS

**Address:** 11 Ross Street, YEPPOON **Description:** 4 bedrooms, 1 bathroom, 1 garage **Price:** Offers over \$649,000 considered **Inspect:** By appointment

**Contact:** Troy Davis, 0400 933 347, YEPPOON REAL ESTATE, 4938 3777





### YEPPOON 28 Kingfisher Drive

4 | 2.5 | 4

OPEN  
SUN  
11:30-12



#### Looking for a SHED?

- Located in a family estate within a short buggy ride to Yeppoon Golf Course!
- Open plan living, full sized laundry, dream outdoor tiled entertaining space
- 9 x 7.5m powered colourbond shed with insulation, toilet and 2.95m clearance
- Open plan living adjoins stone kitchen with great storage, dishwasher, breaky bar
- 4 Generous bedrooms, all with aircon and mounted tvs included, linen storage
- Fully fenced with electric gate to shed side with room to park more vehicles
- Rain water tank, established gardens and complete with 6 kw solar power

**Offers over \$775,000 considered**

**LEISA RICHARDSON**  
0427 251 008



### YEPPOON Unit 18, 30-32 Adelaide Street

2 | 2 | 1



#### Stylish apartment, sea views, unlimited potential

- Fully furnished and air conditioned & features a queen size bedroom with ensuite
- Fully equipped kitchen with stone benchtops and dishwasher plus private laundry
- The second bedroom has separate bathroom, small kitchenette and balcony
- Secure parking, internal lift, communal BBQ and entertaining space
- Situated only a short walk to the Lagoon, restaurants, cafes, main street & beach
- Cool off in the sparkling inground pool overlooking the water or lounge poolside
- This is a fantastic investment or lifestyle opportunity in an OSHEN complex

**Offers over \$685,000 considered**

**ESME & CLAUDIA COREN**  
0423 877 414



### YEPPOON Unit 2/39 Tabone Street

3 | 2 | 1



#### SPACIOUS 3 BEDROOM HOME, CLOSE TO TOWN, BEACHES

- Master bedroom has ensuite, W.I.R, ceiling fan & split system air-conditioner
- The other 2 bedrooms have robes, serviced by family bathroom, indoor laundry
- Air-con'd open plan dining living area, kitchen has generous storage and space
- Big side access for the boat or van, water tank and security screens throughout
- Location is central - close to schools, cafe's, shops, CBD and pristine beaches
- Currently tenanted until September 2022, this home makes an ideal investment
- You can buy one or buy both - there are no body corporate fees either

**Offers over \$469,000 considered**

**LISA WILSON**  
0418 247 020



### YEPPOON 34 Rockhampton Road

3 | 1 | 1



#### Great renovator walk to schools

- Queenslander style home on fully fenced 1058m2, room for off street parking
- Slightly raised hardiplank & colourbond home with 10' ceilings
- Large kitchen, open plan living with separate dining & lounge rooms
- 8mx4m colour bond shed with single roller door and side access
- Ideal family home or future investment, room for pool & kids to play
- 3 spacious bedrooms, large bathroom + combined laundry & toilet
- Close to Yeppoon Central Shopping centre, schools & Lagoon

**Offers over \$399,000 considered**

**ANDREW DOWIE**  
0429 391 379





# DO YOU WANT YOUR INVESTMENT MANAGED BY AWARD WINNERS?



*Rent with us today!  
Call 4938 3777*



**YEPPOON**  
REAL ESTATE



## REAL ESTATE VISION GROUP



**BLACKWATER 07 4982 6055** 14 Mackenzie Street  
**EMERALD 07 4987 7055** Shop 2, 2-8 Mayfair Drive



4 BEDROOMS

**\$360,000**

37 Thornton Street, Emerald  
 4 bed 2 bath 2 car



3 BEDROOMS

**\$259,500**

Unit 1, 56 Mayfair Drive, Emerald  
 3 bed 2 bath 1 car



4 BEDROOMS

**\$280,000**

47 Stower Street, Blackwater  
 4 bed 2 bath 1 car 1 shed



4 BEDROOMS

**\$570,000**

73 Hibernia Street, Capella (2 ha)  
 4 bed 2 bath 6 Car 1 shed



4 BEDROOMS

**\$179,000**

Unit 4, 6 Clark Drive Emerald  
 4 bed 1 bath 1 car 1 shed



3 BEDROOMS

**\$159,500**

1B Pendula Street, Blackwater  
 3 bed 2 bath 2 car

**Your Family Agency in the Central Highlands**

12555537-HC25-22

## HOME FOCUS



# MODERN FOUR BEDROOM HOME

**MAJOR** reduction in sale price is this very well presented and maintained home.

Featuring four good size bedrooms, all with built-in robes while the master boasts an impressive ensuite.

The kitchen is well laid out, finished in quality cabinetry and oversees the large open plan dining and living areas of the home.

Polished timber flooring provides easy clean and timeless appeal. The bathroom boasts a shower and separate bath finished in neutral tone and tiling, the laundry blends in matching tones and provides a workable space with rear access to the line.

Outside is a single carport on a great size flat block with wrap timber deck to the front and side. A pleasant street appeal makes



this property a lovely address to call home. Call 07 4982 6055 for an inspection. Currently tenanted, speak to the agent for details. ●

## HOME ESSENTIALS

**Address:** 7 Park Street, BLACKWATER **Price:** \$299,900

**Description:** 4 bedrooms, 2 bathrooms, 1 garage **Inspect:** By appointment

**Contact:** Dee 0428 770 557, REAL ESTATE VISION GROUP, 4982 6055



## Centrally Located Unit with STUNNING OCEAN VIEWS!

Presenting to you, this one bedroom, one bathroom unit in Oshen Apartments. Perfectly located in the centre of Yeppoon this property is ideal for an investment, AirBNB or someone starting out in the property market!

Featuring everything you need including kitchenette, balcony and stunning views of Yeppoon Main Beach, the Keppels and out towards Rosslyn Bay. Walking distance to local shops and restaurants and secure car parking for one.

Oshen Apartments complex features a swimming pool with ocean views, games room, coffee and BBQ terrace and lifts to all accommodation levels.

This property is being sold by auction or without a price and therefore a price guide cannot be provided. The website may have filtered the property into a price bracket for website functionality purposes.



**RORY WEX 0414 134 265**

12553243-SN23-22

## HAVE YOU OUTGROWN YOUR HOME?



**NEED TO UPGRADE?**

**TALK TO YOUR REAL ESTATE AGENT TO FIND OUT HOW YOU CAN ADVERTISE YOUR PROPERTY HERE.**  
 Or call CQ Today (07) 4863 5050

**CQToday**

12536830-JW07-22



# Wedding bells are ringing

## Chloe and Sam tie the knot

Chloe and Sam Silver celebrated their special day in Brisbane surrounded by family and friends.

The big day went ahead with a bit of rain, but it did not deter the happy couple.

Festivities lasted well into the night, and Chloe and Sam could not keep their eyes off each other.

Chloe's mum Jenny had made the wedding cake, which tasted as good as it looked.

The two were set to be married by Roxanne Hodda, after being introduced through Jenny, who thought she would be a perfect fit.

Ultimately, Chloe and Sam were married by Georgina Black, a Brisbane-based celebrant who loves love, as Roxanne couldn't attend.

Chloe and Sam are looking forward to married life as husband and wife.

**The vendors were:**

- Ceremonies by Georgina (celebrant) Roxanne Hodda (celebrant).
- George Bowden Photography (photographer).
- MIRRA Events (venue).



Chloe and Sam celebrated their day with family and friends.

- Hello LVLY (florist).
- Abby Raye Crane (make up).
- Twisted Pair Productions (sound system).
- Gladstone Bridal Boutique (bridal gown).
- Epic hair design (hair stylist).



The newlyweds couldn't take their eyes off each other.

Pictures: SUPPLIED



Chloe and Sam were pronounced husband and wife at a ceremony in Brisbane.

## What is a unique selling proposition? Standing out

Last time we answered a question about starting a business without a business plan and we suggested skipping the long, detailed document and instead launching when you could briefly answer the following four questions:

- What are you going to sell (product)?
- Who are you going to sell it to (target market)?
- Why should they buy it (unique selling proposition)?
- How are you going to make them aware you exist (advertising channels)?

That led to several people asking for a more detailed explanation of what a unique selling proposition (USP) actually is. This is a great question and getting the USP right is so fundamental to the long-term planning and success of any start-up that it is worth spending some time on.

As we noted, the USP is traditionally defined as the reason why a consumer should buy your product or your service. However, this is an oversimplification and thinking in terms of just uniqueness can lead you down the wrong path. A better way to understand your USP is that it is the thing your product or service does for customers that fills a need or solves a problem they care about in a way that is different to how your competitors do this.

If we break that down, the first thing we can see is that your USP must fill a need or solve a problem for customers. Fundamentally, these are the only two reasons that people will exchange money for what you are offering. It is worth noting that if you can mentally move your point of view around a bit, you will realise that filling a need or solving

**YOUR BUSINESS QUESTIONS ANSWERED**

**WITH JAMES HARRIS**  
james@qsb-consulting.com



ing a problem is the same thing; the difference comes down to the customer's perspective and how you frame your communication with the customer.

For example, "I want to lose weight to look better (fill a need)," and "I need to lose weight or I'll have a heart attack by the time I'm 50 (solve a problem)," both lead the potential customer to buy your diet shake product. So, ideally, you will be able to present your product or service in a way that convinces customers that it will do both, but you need to tick at least one of these boxes convincingly.

The second criterion for a solid USP is that the need you are filling or problem you are solving is something your potential customer seriously cares about. You can build the best mousetrap in the world, but someone who doesn't have a mouse problem won't ever buy it.

The third criterion is that you must be filling a need or solving a problem in a way that is different to your competitors. This is where the uniqueness really comes in. Just because the customer has a need or a problem, and it's important to them, doesn't mean they will buy from you. And why should they when there is a world of competing products and services out there that will deliver what they need?

Your challenge is to demonstrate that



A three-wheeled car is certainly unique but also impractical and dangerous.

your product or service delivers in a way that none of your competitors do and this difference makes what you deliver to the customer a better option than what your competitors deliver.

As you think about what your USP could be, remember that uniqueness in and of itself is not actually the basis of a successful USP. For example, most cars have four wheels, but you want to manufacture a three-wheeled car. It's certainly unique, but anyone who has

driven a three-wheeled car will tell you they are both impractical and dangerous so your uniqueness will not translate into a valuable USP from a customer's perspective.

If you have a question about starting a business or running your existing business, we'd love to hear from you because we'll select a new question to answer here every two weeks. You can submit your question to james@qsb-consulting.com using the subject 'CQToday'.



# Gardening

Neil Fisher



Tibouchina Groovy Baby.



Tibouchina Alstonville growing at Mount Archer.

## Terrific Tibouchinas

Over the last few weeks, I have embarked on a new walking program.

I've been walking the pathways around the Rockhampton, Gracemere and the Northern Suburbs, and hopefully Mount Morgan next week. It's something I would recommend to everyone.

At the moment, you could not help but notice the spectacular sight of the purple-flowering Lasiandras or Tibouchinas.

This shrub with rich velvet green leaves and deep violet to purple flowers is quite adaptable to Central Queensland climatic conditions, although it is recommended that it be planted in protected positions, especially from frosts.

Tibouchinas like a sunny spot and a light friable soil with plenty of moisture during the growing season.

Their square stems are brittle, so they also need protection from strong winds, especially when young.

Tibouchinas enjoy slightly acidic soil conditions, making them perfect companions for the likes of Camellias, Azaleas and Gardenias.

Because of this, small quarterly applications of trace elements will improve the growth rate.

Tibouchinas are also very tolerant of heavier soil conditions and make a good choice for gardens with clay soils.

The best time for major pruning is immediately after flowering, which is usually around May.

Tibouchinas originate in South America, with its name derived from the native name in the Guiana region of Brazil.

Many people believe that the Tibouchina is a native plant due to the association with the

town of Alstonville, which has given its name to a hybrid variety of the plant.

The town of Alstonville in northern New South Wales has a Tibouchina festival each year in March, when the plants are providing their best display.

The presence of a flowering Tibouchina in the garden is a sight worth savouring and heralds the coming of cooler gardening weather.

**VARIETIES OF TIBOUCHINA TO LOOK FOR**

Tibouchina Alstonville is a tall shrub to 3m high and can be trained as a small tree with appropriate pruning.

Its small, controllable size has no doubt contributed to its popularity, where there is no longer a space for the grand, tropical flowering trees.

The dark purple flowers of Tibouchina Alstonville will provide a stunning floral display.

Tibouchina Elsa is a medium-sized shrub with silver-green velvety foliage with unique flowers that are white with a hint of purple in the centre.

Tibouchina Groovy Baby is a dense, compact and dwarf variety of the purple-flowering Lasiandra or Tibouchina, only growing to 45cm high and same in width.

Tibouchina Jules is a dwarf form of Tibouchina Alstonville, growing about 1m high, and is suitable for a garden bed or as a tub plant.

Tibouchina Kathleen is a hybrid of Tibouchina Granulosa, which has pink flowers and will grow into a tree if left unpruned.

Tibouchina Noelene is another one of the hybrids from Alstonville.

This bushy shrub grows to 2m high and has flowers that open white and darken to pink with age.



Tibouchina Jules.

## Calling all Gerbera lovers

Would like you to learn more about Gerberas? Would you like to start your own Gerbera collection? Well, the Central Queensland Gerbera Interest Group has been formed and would like to attract new members.

The group holds monthly meetings at different member's gardens. I had the pleasure in joining the Central Queensland Gerbera Interest Group members at their meeting last

Wednesday in Glenlee.

To join, go to the CQ Gerbera Group Facebook page.

Central Queensland Gerbera Interest Group.





# Rural Matters

## Abundance of food

By **Georgie Somers**,  
AgForce General President

Popular in musical theatre circles, this well-known song from *Oliver!* is a poignant nod to the Dickensian workhouse orphans who dreamed of a life without gruel.

Hot sausage and mustard, cold jelly and custard... Just picture a great big steak, fried, roasted or stewed...

With lyrics like these on hand, even the most well-fed among us would be forgiven for thinking about our next meal.

And in modern day Australia there is so much more to look forward to than a meagre bowl of watery oats.

Not only are we fortunate enough to live in a country with an abundance of choice, but the quality is also second to none.

This month we celebrated World Food Safety Day, and embraced the chance to highlight our country's role in producing clean, safe, nutritious food for consumption both here and abroad.

While there are lots of ways to ensure food safety, a key part is having sound food regulation, and international food standards that facilitate safe food trade.

That's where agriculture comes in.

The role that we play in feeding the nation should never be underestimated.

We play a key part in ensuring Australia's robust food safety standards (among some of the highest in the world) and should unashamedly champion our high-quality beef, sheep and goat meats, as well as grains and cane products, over and above all other supplies.

Of course, integral to this are the strong biosecurity systems that protect our planet and ensure agricultural production and ongoing trade.

Society has certainly come a long way since Charles Dickens penned the novel *Oliver Twist*, and there is much to be thankful for.

As you ponder what to eat for dinner to-



Australia's food safety standards are second to none.

night, rest assured it won't be gruel, and know that agriculture will continue to do its part in ensuring an abundance of safe food both in Australia and around the world.

That way, if a certain orphan should dare ask for "some more" to eat again, the answer will be a resounding, "Yes, there is plenty for everyone!"

## Ag caution creeps in

The 'rise and rise' of input costs and fall-out from the war in Ukraine are weighing on sentiment in Australia's agricultural sector, with farmer confidence declining in the latest quarter.

Results of the quarter two Rabobank Rural Confidence Survey, released this month, reveal optimism about high agricultural commodity prices and the prospect of a third consecutive bumper grains harvest has been reined in by the increasing cost of vital farm inputs such as fertiliser, fuel, freight and machinery and broader inflationary pressures in the Australian economy.

In addition, the latest survey reveals 50 per cent of Australian farmers believe the ongoing conflict between Russia and Ukraine will have a negative impact on farm businesses, while 25 per cent expect the effect could be positive.

While farm income projections for the 12 months ahead remain stable, the number of farmers looking to increase investment has declined slightly this quarter.

The latest survey, completed last month, found 28 per cent of Australia's farmers now expect business conditions to improve in the coming 12 months (down slightly from 31 per cent with that view in the previous quarter), while 16 per cent are anticipating a deterioration (from 14 per cent previously).

More than half (53 per cent) expect business conditions to remain stable in the year ahead.

This marks three consecutive quarterly declines in net rural confidence and brings farmer sentiment back to levels last seen in June 2020, after the first pandemic lockdown.

Confidence is highest in the cotton and grain sectors, while also very strong among dairy producers, with high prices combined with excellent seasonal conditions providing the perfect setting for those three industries.

Livestock sector confidence has eased, but strong commodity prices are helping stabilise sentiment.

Rabobank Australia CEO Peter Knoblanche said farmers had been enjoying high agricultural commodity prices and generally-excellent seasonal conditions in many parts of the country for more than two years, but many in the sector were now facing considerable margin pressure with input costs rising on all fronts.

He said the healthy returns of the past two years had put farmers in a strong financial position and many have invested in new technology, machinery and equipment.

"The benefits of those investments are certainly helping farmers create some efficiencies, but the cost pressure is not easing and producers definitely need those higher commodity prices in order to meet rising input costs," he said.

The latest survey found the expectation of rising commodity prices remains the main driver of optimism among farmers with a positive outlook, while 62 per cent of those expecting conditions to deteriorate cited rising input costs as a key cause for concern, ahead of falling commodity prices (27 per cent), overseas markets (15 per cent) and labour shortages (nine per cent).

Mr Knoblanche said the Russia-Ukraine war was also hanging over the sector, with its impacts on key inputs of fuel and fertiliser sending prices for both skyrocketing, cutting farmer margins.

## Prices ease on softer condition at CQLX

Combined agents saw a decreased yarding on Tuesday of 2313 head, comprising of 1405 steers, 706 heifers, 167 cows, 13 cows and calves and 26 bulls.

Cattle were again drawn from local areas along with a large draft from Collinsville.

Quality, although mixed in some classes, was generally good as was condition.

The regular processors were present except for one, operating on reduced limits.

The feeder panel was also lacking enthusiasm and regulars, so prices eased for most types.

### HIGHLIGHTS OF THE DAY

O Solis, Yepoon sold Droughtmaster Steers for 418c/kg weighing 603kg to return \$2521/hd

A & Y Nobbs, Alton Downs sold No.1 Brangus Cross Steers for 498c/kg weighing 462kg to return \$2300/hd

T Dunn & E Grofski, Dululu sold a pen of Brahman Steers for 476c/kg weighing 450kg to return \$2142/hd

M & M Miller, Midgee sold Limo Cross Steers for 706c/kg weighing 280kg to return \$1977/hd

J Collins, Gogango sold Brangus Steers topping at 658c/kg to average 279kg to return \$1725/hd

Winvic Pastoral, Claireview sold Braford Steers for 658c/kg weighing 276kg to return \$1817/hd

C & C Johnson, Wura, sold Brangus Steers for 696c/kg weighing 265kg to return \$1844/hd

B & W Kerr, Ubobo sold No.2 Grey Brahman Steers for 606c/kg weighing 265kg to return \$1606/hd

Kim Borg, Sarina sold Simmental Steers for



684c/kg weighing 255kg to return \$1749/hd

P Coughlan, Calliope sold a run of Brahman Steers to average 577c/kg weighing 255kg to return \$1473/hd

J & Y Galea, Sarina sold Charbray cross steers for 680c/kg weighing 252kg to return \$1715/hd

Malvern Development Pty Ltd, Keppel Sands sold Brangus Weaner Steers for 702c/kg weighing 233kg to return \$1636/hd

L Rutherford, Glenroy sold a run of Droughtmaster Steers to average 688c/kg weighing 221kg to return \$1523/hd

H Clark, Marmor Sold Brahman Cows for 372c/kg weighing 630kg to return \$2344/hd

Vigna Australis, Calliope sold Brahman Cows for 369c/kg weighing 557kg to return \$2058/hd

J & S Dunne Duaringa sold Brahman Cows to 375c/kg weighing 550kg to return \$2065/hd

P Coughlan, Calliope sold Brahman Cows for 352c/kg weighing 533kg to return \$1878/hd

R & J Peff, Wowan sold Brangus Cross Heifers for 396c/kg weighing 571kg to return \$2264/hd

Goondicum Pastoral, Monto sold a run of Brangus Heifers to average 486c/kg weighing 333kg to return \$1623/hd

RS & RJ Milne, Baralaba, sold Charolais Heifers for 630c/kg weighing 278kg to return \$1757/hd

Winvic Pastoral, Claireview sold Braford Heifers for 568c/kg weighing 269kg to return \$1530/hd

M & CA Trevor, Duaringa sold Charbray Heifers for 620c/kg weighing 246kg to return \$1525/hd

Bell Family, Turkey Station, sold Charbray Heifers for 530c/kg weighing 246kg to return \$1307/hd

K & M Becker, Bajool sold Brangus Heifers to 626c/kg weighing 230kg to return \$1444/hd

C & K Faine, Gogango sold Brangus Heifers for 616c/kg weighing 215kg to return \$1324/hd



# Weather

with forecaster Mike Griffin

## Cold winter months ahead

It's not the end of June and most figures suggest Central Queensland is recording colder than normal overnight temperatures.

Most of the inland CQ recorded colder than normal minimums.

If we look at Thangool there were 19 mornings of single-figure minimums in the first 23 days of the month of June.

The lowest was minus 1.2C.

Rockhampton recorded 10 days of single-figure values with the lowest 4.9C.

And the coast recoded seven days of single-figure minimums.

All the way along the Tropic of Capricorn minimums were below average.

Emerald recorded 12 days of single-figure minimums with a low of 4.7C.

Longreach 19 days of single figures with a low of 2C.

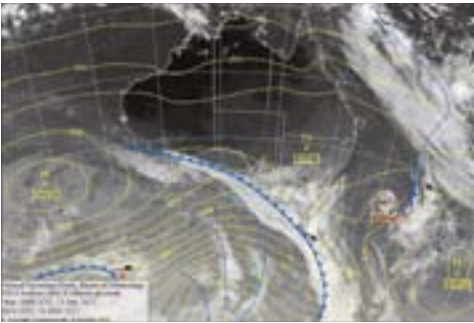
And - wait for it? Alice Springs 22 out of 23 days of single figures with a low of minus 0.5C.

This has been due mostly to the early Polar Outbreak causing drier cold air to be pushed from past Tasmania into Central Australia.

This plunged Southern Australia into a colder early winter and one of the best snow-falls for this time of year, on record.

Add the Winter Solstice it has kept the temperatures down with the lowest solar insulation for the year.

Rockhampton has only had 3mm for the first three weeks of June and rainfall the last 18 days.



When the long-term average is 37.6mm.

I'm reliably told the evaporation at Murray Lagoon has been 3mm each day for the past five days.

The rough figures for last month were around 6mm per day.

This may be keeping the grass green.

### INTERNATIONAL

■ AFGHANISTAN - Over a thousand fatalities after the deadliest (6.1 magnitude) earthquake in 20 years around the Paktika Province near Pakistan.

■ CHINA - Historic floods in Guangdong, Fujian and Jiangxi Provinces in southern China flooded streets and caused landslides last Tuesday. Reports of 50mm of rainfall in three hours at Changsha last Monday. More rain is expected by the weekend.

■ INDIA - Worst flooding in decades takes the

lives of over 100 people. Lightning strikes killed 20 people including 3 children. Over 6 million people were displaced mostly in Bangladesh and northeast India.

■ USA - Western USA is experiencing its driest period in 1,200 years - according to a peer-reviewed study. Dry thunderstorms are expected to cause more Wildfires in California.

### FORECAST

If we look at the Synoptic Chart, the Highs track from west to east on their mean position across the inland of Southern Australia; for this time of year.

While the "Zonal Westerlies" cause fronts that trek across the Bight.

Developing blustery conditions for most of the southern coast and Capitals, with squally showers.

Making the Apparent Temperature close to zero at night.

Plus light snow for the ALPS.

The South-East Trade Winds (SETW) seems to kick in moderately from Shoalwater and ramp up as we go northward towards the Cape.

June normally averages six patches of fog in Rocky.

The Burnett/Wide Bay have been getting their quota.

Yet only one has occurred of any notice this June.

The timing element of the Upper Cloud cover and the SETW have kept this to a minimum.

If a high develops over southern Queensland Friday a fog is likely for the southern Bruce.

Will it move north and affect the Fitzroy early Saturday?

Should be good for the experienced BOAT-IES as the light to moderate winds and sunny conditions prevail for the early weekend.

Watch for the WOW winds or the Winter Offshore Winds at night.

They surge up quite quickly around midnight; then die off during the day.

There are variations of this.

Could be marginal Sunday/Monday as the cloud increases with moderate SE breezes.

The SETW ramps up Tuesday/Wednesday with clouds increasing forming offshore showers threatening the coast.

Widespread cloud from the Tropics streams south from the Top End/Gulf covering most of Queensland.

Looks like some rain; with the amount the problem to forecast. It all depends on the "Jet-stream".

Will it allow the middle-level cloud to deepen and hang over the Central West and reach the Central Highlands around Thursday?

Next question - will the rain reach the Tropic of Capricorn?

Or will it stay north of 22 degrees south?

## SPORTS QUIZ

- Which two NHL teams won their way to the 2022 Stanley Cup Finals?
- Liz Watson and Steph Wood are captain and vice-captain of which Commonwealth Games team sport?
- Bailey Smith last played for which AFL club?
- Which seven-time Wimbledon singles winner accepted a wildcard entry to this year's tournament after a year away from top level competition?
- Which national team did the Socceroos defeat 5-4 on penalties to qualify for the 2022 World Cup?
- Montrezl Harrell last played for which NBA team?
- Which professional golf tournament did Rory McIlroy win to claim his 21st PGA Tour title?
- Former Wallaby Israel Folau is set to make his international rugby return after being named in which country's national team squad?
- Which two New Zealand-based teams qualified for the final of the 2022 Super Rugby Pacific season?
- Which Australian racehorse defeated a world-class field to win the 2022 King's Stand Stakes at Royal Ascot in England?
- What months in 2022 will the FIFA World Cup take place in Qatar?
- What year did the GWS Giants join the AFL?
- Who is the current coach of the Socceroos?
- Former Wallabies star David Pocock was recently elected to what house of Australian parliament?
- What Indigenous former St Kilda star was recently inducted into the AFL Hall of Fame?
- Which national soccer team recently lost 0-4 at home to Hungary in the UEFA Nations League?
- What city will host the 2028 Summer Olympic Games?
- Which Major League Baseballer was nicknamed "The Bambino"?
- The 1986 movie *Hoosiers* revolves around which sport?
- How many periods of play are there in a National Hockey League game?
- In what sport would you hear the terminology double hit, flick and kill?
- Who won Australia's sole gold medal at the 2022 Winter Olympics?



- In the EPL, how many times has Manchester United been champions?
- In which year did Wimbledon prize money become equal for both sexes?
- Who won the 2021-22 Sheffield Shield title?
- Which two Asian nations will the Australian Boomers play home matches against in July 2022?
- What 2007 Marvel film was partially filmed at Melbourne's Marvel Stadium?
- In what country was Olympic champion canoeist Jess Fox born?
- The NHL team nicknamed the Sabres is based in which US city?
- Baron Pierre de Coubertin, founder of the modern Olympic Games, excelled in which sport?



Rory McIlroy



<b>ABC TV (22)</b> <b>6.00</b> Rage. (PG) <b>7.00</b> Weekend Breakfast. <b>9.00</b> Rage. (PG) <b>12.00</b> ABC News At Noon. <b>12.30</b> Midsomer Murders. (Masv, R) <b>2.00</b> Grand Designs. (R) <b>2.45</b> To Be Advised. <b>3.55</b> Julia Zemiro's Home Delivery. (PG, R) <b>4.40</b> Landline. (R) <b>5.10</b> Superworm. (R) <b>5.35</b> <b>MOVIE:</b> Shaun The Sheep: The Movie. (2015, Gh, R)	<b>SBS (3)</b> <b>6.00</b> WorldWatch. <b>9.00</b> Love Your Garden. (PG) <b>10.00</b> Great Canal Journeys. (PG) <b>11.00</b> Paul O'Grady: For The Love Of Dogs. (PG) <b>12.00</b> WorldWatch. <b>1.00</b> PBS NewsHour. <b>2.00</b> Gymnastics. FIG Artistic World Challenge Cup Series. <b>3.30</b> Gymnastics. FIG Artistic World Challenge Cup Series. <b>4.30</b> The Pyramids: Solving The Mystery. (R) <b>5.30</b> Forgotten Frontlines. (PG)	<b>SEVEN (7)</b> <b>6.00</b> NBC Today. <b>7.00</b> Weekend Sunrise. <b>10.00</b> The Morning Show: Weekend. (PG) Highlights from the past week. <b>12.00</b> Horse Racing. Royal Randwick Raceday and Caulfield Winter Raceday. <b>5.00</b> Seven News At 5. <b>5.30</b> Creek To Coast. A look at the latest in outdoor activities.	<b>NINE (8, 9)</b> <b>6.00</b> Easy Eats. <b>7.00</b> Weekend Today. <b>10.00</b> Today Extra: Saturday. (PG) <b>12.00</b> Living On The Coast: Shoalhaven Recovers. <b>12.30</b> Our State On A Plate. (PG) <b>1.00</b> Rugby League. Women's Pacific Test. New Zealand Kiwi Ferns v Tonga. <b>3.20</b> Rugby League. Pacific Test. New Zealand Kiwis v Tonga. From Mt Smart Stadium, Auckland, New Zealand. <b>5.30</b> Getaway. (PG)	<b>TEN (5, 1)</b> <b>6am</b> Morning Programs. <b>7.30</b> Wildlife Rescue Australia. (PGm, R) <b>8.30</b> What's Up Down Under. (R) <b>9.00</b> Australia By Design: Innovations. (PG, R) <b>9.30</b> St!O. (PG) <b>12.00</b> Living Room. (R) <b>1.00</b> Offroad Adv. <b>2.00</b> Pooches At Play. (Return) <b>2.30</b> Taste Of Aust. (R) <b>3.00</b> What's Up Down Under. <b>3.30</b> All 4 Adventure. (PG, R) <b>4.30</b> Farm To Fork. (PG, R) <b>5.00</b> News.
<b>7.00</b> ABC News. Takes a look at today's top stories. <b>7.30</b> The Good Karma Hospital. (PGa) The happy news that Karishma is awake is offset by her loneliness. Samir realises she needs more than medicine to fix her. <b>8.20</b> The Split. (Return, Mals) Hannah and Nathan are in the final stages of negotiating their divorce. <b>9.20</b> Miniseries: Miss Fisher And The Crypt Of Tears. (Mv, R) Part 1 of 2. Phryne Fisher embarks on an adventure involving an ancient curse and priceless emeralds. <b>10.10</b> The Trial Of Christine Keeler. (Mals, R) Christine's stalker case goes to trial. <b>11.10</b> High Fidelity. (Ml, R) Rob confronts Mac. <b>11.40</b> Rage. (MA15+adhlinsv) Guest programmed by Alexionfire.	<b>6.30</b> SBS World News. <b>7.35</b> World's Most Scenic Railway Journeys: Devon And Cornwall. (PG) A scenic railway journey through Devon to the tip of Cornwall, heading back in time to recapture the golden age of luxury train travel. <b>8.30</b> On Broadway. (PGa, R) As audiences prepare for the return of live theatre after an absence of 18 months, an all-star cast, Hugh Jackman and Ian McKellen, tell the inside story of the last time Broadway came back from the brink <b>10.00</b> Birth Of Empire: The East India Company. (PG, R) Part 1 of 2. <b>12.15</b> Stop At Nothing: The Lance Armstrong Story. (Mal, R) <b>2.10</b> <b>MOVIE:</b> Don't Tell. (2017, Malsw, R) Jack Thompson. <b>4.00</b> Going Places With Ernie Dingo. (PGaw, R)	<b>6.00</b> Seven News. <b>7.00</b> Border Security: Australia's Front Line. (PG, R) Biosecurity officers find a dangerous concealment, but things get heated when they are caught red-handed. <b>7.30</b> <b>MOVIE:</b> Die Hard 2. (1990, Mlv, R) A cop becomes involved in a hostage situation at an airport while waiting for his wife's plane to arrive. Bruce Willis, Bonnie Bedelia, Dennis Franz. <b>10.00</b> <b>MOVIE:</b> Bad Boys II. (2003, MA15+lv, R) Two unorthodox narcotics officers are assigned to investigate an international drug-smuggling ring. Will Smith, Martin Lawrence, Gabrielle Union. <b>1.00</b> Instant Hotel. (PG, R) Hosted by Laurence Llewelyn-Bowen. <b>2.30</b> Home Shopping. (R) <b>4.00</b> It's Academic. (R) <b>5.00</b> House Of Wellness. (PGa, R)	<b>6.00</b> Nine News Saturday. <b>7.00</b> A Current Affair. <b>7.30</b> Rugby League. Pacific Test. Papua New Guinea v Fiji. From Campbelltown Sports Stadium, Sydney. <b>10.00</b> <b>MOVIE:</b> Collateral. (2004, MA15+lv, R) A taxi driver is taken hostage by a contract killer and forced to act as his driver while he makes his rounds. Tom Cruise, Jamie Foxx. <b>12.20</b> Labour Of Love. (PGal, R) Hosted by Kristin Davis. <b>1.10</b> Living On The Coast: Shoalhaven Recovers. (R) A look at the region of Shoalhaven, NSW. <b>1.35</b> Our State On A Plate. (PG, R) <b>2.00</b> TV Shop: Home Shopping. (R) <b>4.30</b> Global Shop. (R) <b>5.00</b> TV Shop: Home Shopping. (R) <b>5.30</b> Wesley Impact With Stu Cameron. (PG)	<b>6.00</b> Wildlife Rescue Australia. (PGm) Head vet Dr Bree and the team check out a five-week-old flying fox with a sore wing. <b>7.00</b> The Dog House. (PG) An 85-year-old is trying to decide who would make a better match: a stubborn beagle or shy Jack Russell. <b>9.00</b> Ambulance Australia. (Ma, R) The low blood sugar levels of a 23-year-old type 1 diabetic have led to a dangerous seizure. Another code 1 comes in for a two-year-old suffering from some serious respiratory issues. <b>10.00</b> To Be Advised. <b>11.00</b> My Life Is Murder. (Mlv, R) A CFO of a hospitality empire dies. <b>12.00</b> Home Shopping. (R) <b>3.00</b> Infomercials. (PG, R) <b>4.30</b> Home Shopping. (R) <b>5.00</b> Soccer. Women's International Friendly. Spain v Australia.
<b>ABC TV PLUS (22)</b> <b>6am</b> Children's Programs. <b>7.10pm</b> Shaun The Sheep. <b>7.20</b> Bluey. <b>7.30</b> Spicks And Specks. <b>8.00</b> Q! <b>8.30</b> Live At The Apollo. <b>9.15</b> Sammy J. <b>9.20</b> The Stand Up Sketch Show. <b>9.45</b> Whose Line Is It Anyway? <b>10.10</b> Would I Lie To You? <b>10.40</b> Friday Night Dinner. <b>11.05</b> The Witchfinder. <b>11.40</b> Blunt Talk. <b>12.05am</b> Schitt's Creek. <b>12.30</b> Brassic. <b>1.15</b> David Attenborough's Natural History Museum Alive. <b>2.20</b> Late Programs.	<b>SBS VICELAND (31)</b> <b>6am</b> WorldWatch. <b>6.50</b> Indian Country Today News. <b>7.20</b> WorldWatch. <b>9.30</b> Shortland St. <b>11.00</b> Letterkenny. <b>Noon</b> Bamay. <b>12.20</b> Letters And Numbers. <b>12.50</b> If You Are The One. <b>2.50</b> Over The Black Dot. <b>3.20</b> Yokai! Footy. <b>4.15</b> World Watch. <b>5.40</b> Insight. <b>6.40</b> Good With Wood. <b>7.35</b> Underground Worlds. <b>8.30</b> Hoarders. <b>9.20</b> <b>MOVIE:</b> Blade Runner. (1982, M) <b>11.25</b> Harlots. <b>12.30am</b> Late Programs.	<b>7TWO (72)</b> <b>6am</b> Home Shopping. <b>8.30</b> Travel Oz. <b>10.00</b> All The Things. <b>10.30</b> Going Solo In Japan: Wonders Of Kyushu 2. <b>11.00</b> Bargain Hunt. <b>Noon</b> Weekender. <b>12.30</b> Creek To Coast. <b>1.00</b> House Of Wellness. <b>2.00</b> Sydney Weekender. <b>2.30</b> Penelope Keith's Hidden Coastal Villages. <b>3.30</b> Border Patrol. <b>5.30</b> The Yorkshire Vet. <b>8.30</b> I Escaped To The Country. <b>9.30</b> Escape To The Country. <b>11.30</b> Late Programs.	<b>9GEM (81, 92)</b> <b>6am</b> Morning Programs. <b>8.30</b> TV Shop. <b>10.00</b> My Favorite Martian. <b>10.30</b> Avengers. <b>11.30</b> <b>MOVIE:</b> The Halfway House. (1944, PG) <b>1.30pm</b> <b>MOVIE:</b> The Floating Dutchman. (1952, PG) <b>3.00</b> <b>MOVIE:</b> A Hole In The Head. (1959) <b>5.30</b> Rugby League. Pacific Test. Samoa v Cook Islands. <b>7.30</b> <b>MOVIE:</b> Robin Hood. (2010, M) <b>10.10</b> <b>MOVIE:</b> Conan The Barbarian. (2011, MA15+) <b>12.20am</b> Late Programs.	<b>10 PEACH (52, 11)</b> <b>6am</b> The Late Show With Stephen Colbert. <b>7.00</b> The King Of Queens. <b>8.00</b> Frasier. <b>8.30</b> Neighbours. <b>10.30</b> The Big Bang Theory. <b>Noon</b> The King Of Queens. <b>12.30</b> MasterChef Australia. <b>6.00</b> The Big Bang Theory. <b>10.15</b> Friends. <b>12.15am</b> Home Shopping. <b>1.15</b> Infomercials. <b>1.45</b> Mom. <b>3.05</b> The Big Bang Theory. <b>3.30</b> Charmed. <b>4.30</b> Home Shopping.
<b>NITV (34)</b> <b>6am</b> Morning Programs. <b>1pm</b> Celtics/Lakers: Best Of Enemies. <b>2.50</b> Touch Football. WA State Championships. <b>3.40</b> 42 To 1. <b>4.40</b> Marion Jones: Press Pause. <b>5.40</b> Gaelic Football. Ladies Association. Highlights. <b>5.45</b> Small Business Secrets. <b>6.15</b> Strait To The Plate. <b>6.50</b> News. <b>7.00</b> The Casketeers. <b>7.30</b> Wild West. <b>8.30</b> Greatest Hits Of The 80s. <b>9.30</b> <b>MOVIE:</b> Cape Fear. (1991, MA15+) <b>11.45</b> Late Programs.	<b>SBS WORLD MOVIES (32)</b> <b>6am</b> Parade. Continued. (1974, French) <b>7.00</b> Lion. (2016, PG) <b>9.10</b> Sissi: The Fateful Years. (1957, PG, German) <b>11.10</b> Our Struggles. (2018, M, French) <b>1pm</b> Sometimes Always Never. (2018, PG) <b>2.40</b> Robinson Crusoe. (2016, PG) <b>4.20</b> Maiko Haaaan!!! (2007, PG, Japanese) <b>6.40</b> Toast. (2010, PG) <b>8.30</b> Sid And Nancy. (1986, MA15+) <b>10.35</b> Blood Ties. (2013, MA15+) <b>12.55am</b> Late Programs.</			

**Have something to celebrate?**  
**Place a Birthday, Wedding, Baby, Congratulations, Memorial notice with us.**  
**Phone 1300 666 808**  
**sales@networkclassifieds.com.au**

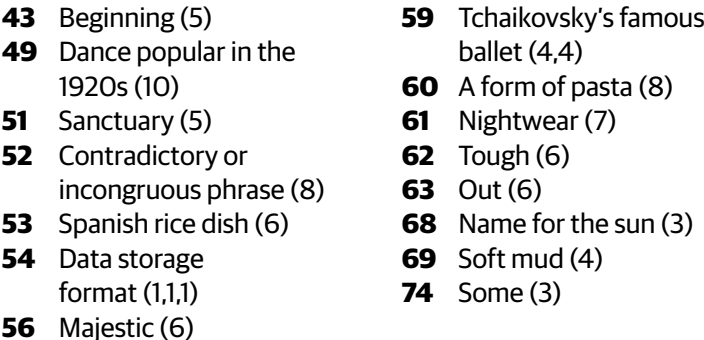
<p><b>ABC TV (22)</b> <b>6.00</b> Rage. (PG) <b>7.00</b> Weekend Breakfast. <b>9.00</b> Insiders. <b>10.00</b> Offsiders. <b>10.30</b> World This Week. (R) <b>11.00</b> Compass. (PG, R) <b>11.30</b> Praise. (R) <b>12.00</b> News. <b>12.30</b> Landline. <b>1.30</b> Gardening Aust. (R) <b>2.30</b> Parkinson In Australia. (PG, R) <b>3.20</b> Chopsticks Or Fork? (R) <b>3.35</b> Nigel Slater's Middle East. (R) <b>4.30</b> Back To Nature. (R) <b>5.00</b> Art Works. (PG, R) <b>5.30</b> Antiques Roadshow.</p> <p><b>6.30</b> Compass: Solstice. (PG, R) A look at Annette and Stuart Baker.</p> <p><b>7.00</b> ABC News Sunday.</p> <p><b>7.40</b> Julia Zemiro's Home Delivery: Marcia Hines. (PG) Part 2 of 4.</p> <p><b>8.30</b> Miniseries: Miss Fisher And The Crypt Of Tears. (Mv) Part 2 of 2. Phryne and Jack find the third and most important Crypt treasure.</p> <p><b>9.20</b> A Life In Ten Pictures: Elizabeth Taylor. (M), (R) Takes a look at Elizabeth Taylor's life through a handful of iconic shots and private photographs.</p> <p><b>10.15</b> Harrow. (Final, Mav, R) Mila Zoric kidnaps Harrow's son.</p> <p><b>11.05</b> Agatha Raisin. (Final, PG, R)</p> <p><b>11.55</b> Parkinson In Australia. (PG, R)</p> <p><b>1.30</b> Rage. (PG) <b>4.10</b> Tenable. <b>5.00</b> Insiders. (R)</p> <p><b>ABC TV PLUS (22)</b> <b>6am</b> Children's Programs. <b>7.10pm</b> Shaun The Sheep. <b>7.20</b> Bluey. <b>7.30</b> Compass. <b>8.00</b> You Can't Ask That. <b>8.35</b> Lucy Worsley Investigates. <b>9.35</b> Southern Ocean. <b>11.05</b> The Story Of Film: A New Generation. <b>12.25am</b> George Clarke's Amazing Spaces. <b>1.15</b> Listen Up. <b>1.40</b> ABC News Update. <b>1.45</b> Close. <b>5.00</b> Hoot Hoot Go! <b>5.05</b> The Hive. <b>5.15</b> Peg + Cat. <b>5.25</b> Cookie Monster's Foodie Truck. <b>5.35</b> Late Programs.</p> <p><b>NITV (34)</b> <b>6am</b> Morning Programs. <b>1.30pm</b> VICE Sports. <b>2.00</b> Away From Country. <b>3.00</b> Rugby League. NRL NT. First Grade Men's Premiership League. <b>4.30</b> Rugby League. NRL. WA Womens Premiership League. <b>6.00</b> Power To The People. <b>6.30</b> News. <b>6.40</b> Undiscovered Vistas. <b>7.35</b> Outback Lockdown. <b>8.30</b> Charley Pride: I'm Just Me. <b>9.55</b> <b>MOVIE</b>: Footy Legends. (2006, PG) <b>11.30</b> Late Programs.</p>	<p><b>SBS (3)</b> <b>6.00</b> WorldWatch. <b>9.00</b> Cook Up With Adam Liaw Bitesize. (R) <b>9.05</b> Love Your Garden. (PG) <b>10.05</b> Great Canal Journeys. (PG) <b>11.00</b> Paul O'Grady: For The Love Of Dogs. (PG) <b>12.00</b> WorldWatch. <b>1.00</b> Motorcycle Racing. ProMX Championship. Round 5. <b>4.00</b> Sportswoman. <b>4.30</b> Inside Hitler's Bunker: The Last Archives. (PGa, R) <b>5.30</b> Forgotten Frontlines. (Final, PG)</p> <p><b>6.30</b> SBS World News.</p> <p><b>7.30</b> Pompeii: The Origins. (PG) Explores the development of Pompeii.</p> <p><b>8.30</b> 10 Mistakes That Sank The Titanic. (PGa, R) Follows the RMS <i>Titanic's</i> journey from construction to catastrophe, charting 10 key mistakes and how this cascade of events, none of them fatal in their own right, tipped the balance against her.</p> <p><b>9.50</b> Uranium: Twisting The Dragon's Tail. (PGa, R) Part 1 of 3.</p> <p><b>12.50</b> <b>MOVIE</b>: Apocalypse Now Redux. (1979, MA15+alv, R) Martin Sheen.</p> <p><b>4.30</b> VICE Guide To Film. (Mdlv, R)</p> <p><b>5.00</b> NHK World English News Morning. <b>5.15</b> France 24 Feature. <b>5.30</b> Al Jazeera News.</p> <p><b>SBS VICELAND (31)</b> <b>6am</b> WorldWatch. <b>6.50</b> Indian Country Today News. <b>7.20</b> WorldWatch. <b>9.30</b> Shortland St. <b>11.00</b> Letterkenny. <b>Noon</b> The New York Times Presents: The Weekly. <b>1.00</b> Speedweek. <b>3.00</b> Cook Up With Adam Liaw Bitesize. <b>3.10</b> If You Are The One. <b>4.40</b> WorldWatch. <b>5.05</b> Brooklyn Nine-Nine. <b>6.45</b> In Search Of... <b>7.35</b> Abandoned Engineering. <b>8.30</b> The UnXplained. <b>9.20</b> Radio Hate. <b>10.15</b> Late Programs.</p> <p><b>SBS WORLD MOVIES (32)</b> <b>6am</b> Maiko Haaaan!!! Continued. (2007, PG, Japanese) <b>7.20</b> Toast. (2010, PG) <b>9.10</b> Robinson Crusoe. (2016, PG) <b>10.50</b> The Young Master. (1980, M, Cantonese) <b>12.50pm</b> Elementary. (2016, M, French) <b>2.50</b> Lion. (2016, PG) <b>5.00</b> White Lion. (2010, PG) <b>6.40</b> Walking On Sunshine. (2014, PG) <b>8.30</b> Vox Lux. (2018, MA15+) <b>10.35</b> Love And Other Drugs. (2010, MA15+) <b>12.40am</b> Late Programs.</p>	<p><b>SEVEN (7)</b> <b>6.00</b> NBC Today. <b>7.00</b> Weekend Sunrise. <b>10.00</b> The Morning Show: Weekend. (PG) <b>12.00</b> House Of Wellness. (PG, R) <b>1.00</b> Jabba's School Holiday Movie Special. (Premiere, PG) <b>1.30</b> <b>MOVIE</b>: Invictus. (2009, PGI, R) <b>4.10</b> Better Homes And Gardens. (R) <b>5.00</b> Seven News At 5. <b>5.30</b> Weekender.</p> <p><b>6.00</b> Seven News.</p> <p><b>7.00</b> 7NEWS Spotlight. Takes a look at an investigation.</p> <p><b>8.00</b> Code 1: Minute By Minute: The Bedside Murders. (M) Takes a look at the case of Roger Dean and the 2011 Quakers Hill nursing home murders.</p> <p><b>9.00</b> <b>MOVIE</b>: Pretty Woman. (1990, MIs, R) A businessman, in need of an escort for the evening, gives a prostitute a first-hand look at the lives of the mega-rich. Richard Gere, Julia Roberts, Hector Elizondo.</p> <p><b>11.35</b> The Blacklist. (Mav)</p> <p><b>12.35</b> The Wall. (PG, R)</p> <p><b>2.00</b> Home Shopping. (R)</p> <p><b>3.30</b> Million Dollar Minute. (R)</p> <p><b>4.00</b> NBC Today.</p> <p><b>5.00</b> Seven Early News. <b>5.30</b> Sunrise.</p> <p><b>7TWO (72)</b> <b>6am</b> Morning Programs. <b>1pm</b> The Great Australian Doorstep. <b>1.30</b> Discover With RAA Travel. <b>2.00</b> The Bowls Show. <b>3.00</b> South Aussie With Cosi. <b>3.30</b> My Italian Family. <b>4.00</b> Harry And Meghan: The First Tour. <b>5.00</b> Charles: 50 Years A Prince. <b>6.00</b> Vintage Roads: Great And Small. <b>7.00</b> Border Security. <b>8.30</b> Chris Tarrant's Extreme Railway Journeys. <b>9.30</b> Mighty Trains. <b>10.30</b> Late Programs.</p> <p><b>7MATE (74)</b> <b>6am</b> Morning Programs. <b>10.00</b> Big Angry Fish. <b>11.00</b> Fish Of The Day. <b>11.30</b> Step Outside. <b>Noon</b> Merv Hughes Fishing. <b>12.30</b> My Fishing Place. <b>1.00</b> Hook, Line And Sinkers. <b>2.00</b> Hook Me Up! <b>3.00</b> ITM Fishing Show. <b>4.00</b> Football. AFL. Round 15. Port Adelaide v Gold Coast Suns. <b>7.00</b> <b>MOVIE</b>: Wild Hogs. (2007, PG) <b>9.05</b> <b>MOVIE</b>: Deadpool. (2016, MA15+) <b>11.20</b> Late Programs.</p>	<p><b>NINE (8, 9)</b> <b>6.00</b> Easy Eats. <b>7.00</b> Weekend Today. <b>10.00</b> Sports Sunday. (PG) <b>11.00</b> NRL Sunday Footy Show. (PG) <b>1.00</b> Drive TV. <b>1.30</b> Children's Hospital. (PGm, R) <b>2.30</b> <b>MOVIE</b>: He's Just Not That Into You. (2009, PGIs, R) <b>5.00</b> News: First At Five. <b>5.30</b> My Way.</p> <p><b>6.00</b> Nine News Sunday.</p> <p><b>7.00</b> Rugby League. State of Origin. Game 2. New South Wales v Queensland.</p> <p><b>9.50</b> State Of Origin Post-Match. A wrap-up of the State of Origin clash.</p> <p><b>10.50</b> Nine News Late. A look at the latest news and events.</p> <p><b>11.20</b> The First 48: Mother Of Two. (Malv) A look at the murder of Michelle Spence.</p> <p><b>12.15</b> Accident, Suicide Or Murder: Two Deaths, One Suspect. (Mv)</p> <p><b>1.05</b> Drive TV. (R)</p> <p><b>1.30</b> TV Shop: Home Shopping. (R)</p> <p><b>4.00</b> Believer's Voice Of Victory. (PGa)</p> <p><b>4.30</b> Take Two. (R)</p> <p><b>5.00</b> News Early Edition. <b>5.30</b> Today.</p> <p><b>9GEM (81, 92)</b> <b>6am</b> Morning Programs. <b>7.30</b> In Touch. <b>8.00</b> Beyond Today. <b>8.30</b> The Incredible Journey. <b>9.00</b> TV Shop. <b>10.00</b> The AFL Sunday Footy Show. <b>Noon</b> Australia's Top Ten Of Everything. <b>1.00</b> Getaway. <b>1.30</b> World's Greatest Man Made Wonders. <b>2.30</b> <b>MOVIE</b>: Silver Bears. (1978, PG) <b>4.55</b> <b>MOVIE</b>: El Dorado. (1966, PG) <b>7.30</b> David Attenborough's Green Planet. <b>8.40</b> To Be Advised. <b>11.00</b> Late Programs.</p> <p><b>9GO! (82, 93)</b> <b>6am</b> Children's Programs. <b>1.30pm</b> America's Top Dog. <b>2.30</b> Say Yes To The Dress: UK. <b>3.30</b> Top Chef. <b>4.30</b> Full House. <b>5.00</b> To Be Advised. <b>7.00</b> <b>MOVIE</b>: The Secret Life Of Pets 2. (2019, PG) <b>8.40</b> <b>MOVIE</b>: John Wick. (2014, MA15+) <b>10.40</b> <b>MOVIE</b>: Underworld: Awakening. (2012, MA15+) <b>12.15am</b> <b>MOVIE</b>: The Eagle. (2011, M) <b>2.10</b> A1: Highway Patrol. <b>3.00</b> Power Rangers Dino Charge. <b>3.30</b> Thunderbirds. <b>4.30</b> Late Programs.</p>	<p><b>TEN (5, 1)</b> <b>6.00</b> Soccer. Women's International Friendly. Spain v Australia. Continued. <b>8.00</b> GCBC. (R) <b>8.</b></p>
---	---	--	---	--



## No. 050

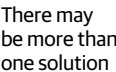
**65** Fool (4)  
**66** Expel (5)  
**67** Motive (6)  
**70** Editor's note (4)  
**71** Type of acid (5)  
**72** Repeat (4)  
**73** Fastener (4)  
**75** Berserk (4)  
**76** Catholic Pope (7)  
**77** Disturb (7)  
**78** Man-made (9)

- 2** Fish tank (8)
- 3** Southern Asian country (8)
- 4** Peeve (3)
- 5** Wan (4)
- 6** Lunar phase (6)
- 7** Distant (6)
- 8** Singing popular songs to recorded music (7)
- 9** Direction given by a judge (5,5)
- 11** Curse (3)
- 12** Physicist who formulated the theory of relativity (8)
- 16** A sweet pastry (6)
- 18** Wood (6)
- 22** Renovate (5)
- 24** Gnome (3)
- 26** Pruning shears (9)
- 27** Daffodil (9)
- 30** Lift (5)
- 31** Young female horse (5)
- 33** Necessary (9)
- 34** Dealer (9)
- 36** Alcoholic honey drink (4)
- 37** Winged mammals (4)
- 40** Pastry treats (4)
- 41** Masticate (4)
- 42** Egyptian peninsula (5)

[illegible]

## No. 050

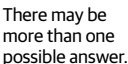
Place each of the tiles of letters into the blank jigsaw below to create four six-letter words going across and down.



**ANSWERS:** BEDBUG, BEDLAM, UGLIER, AMPLER

## No. 046

Starting with the seven-letter word, drop a letter and form a six-letter word. Continue in this manner until you reach the single letter at the bottom. You can rearrange the letters in each step, if necessary.



**ANSWERS:**

## Naomi Watts

### 1. Where was Watts born?

- A. England  
B. Australia  
C. America  
D. India

**2. Which Aussie series does she not appear in?**

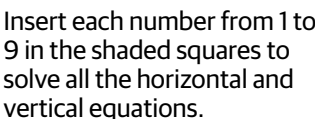
- A. Hey Dad..!  
B. Home and Away  
C. Neighbours  
D. Brides of Christ

**3. Watts turned down a role in which Aussie series?**

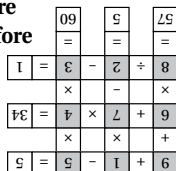
- A. *E Street*  
B. *Sons and Daughters*  
C. *The Comedy Company*  
D. *A Country Practice*

**ANSWERS:** 1A, 2C, 3D, 4B, 5B.

## No. 050



**Multiplication and division are performed before addition and subtraction.**



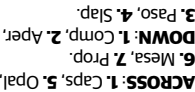
## No. 046

The starting letter could be in any segment, and all subsequent letters are able to be connected following a path through the gaps in the walls. You may only enter each of the segments once, and all letters must be used.

**HINT: The answer is a phrase.**



## No. 046



**1** Hats (4)  
**5** Precious stone (4)  
**6** Elevated tableland (4)  
**7** Temporary support (4)

- 1** Gratis (inf) (4)
- 2** One who copies (4)
- 3** City in Texas, El — (4)
- 4** Hit with open hand (4)







# Network Classifieds

sales@networkclassifieds.com.au  
networkclassifieds.com.au

1300 666 808

HAVE YOUR COPY OF  
CQ TODAY HOME DELIVERED.

1300 170 885

todaysservices.com.au

## Announcements

### Deaths

#### MILLER, Margaret (Meg)

Of Benevolent Living and formerly of Gracemere, passed away peacefully on Sunday 12th June 2022.

Aged 93 years.

Loved Wife of Kevin (dec).

Much loved Mother of Margaret, Heather, Dallas, Lexie and families.

Meg was Privately Cremated.



FINLAYSON & McKENZIE (AFDA)  
56 William Street, Rockhampton  
Phone 4922 1269

12555752-A026-22

### Funeral Services

#### FRISCH, Norma Joyce

Late of Turner Road, Wandal. Passed away peacefully on Sunday 19th June 2022

Aged 94 years.

Dearly loved Wife to Ivor.

Adored Mother and Mother-in-law to Rhonda (dec) and Ron, Kirsten and Murray, Bronwyn, Ceinwen and Rob.

Cherished Grandmother to 9 Grandchildren and Great Grandmother to 7 Great Grandchildren.

Much loved Sister, Sister-in-law And Aunt to her family

Family and Friends are respectfully invited to attend A Celebration of Norma's Life to be held at St. Luke's Anglican Church, Cnr of Rundle and Murray Street Wandal on Monday 27th June 2022 commencing at 2pm.



FINLAYSON & McKENZIE (AFDA)  
56 William Street, Rockhampton  
Phone 4922 1269

12555751-A026-22

### Funeral Services

#### BRIGHTMAN, Dorothy Ellen May (Dot)

Of Eventide Home and formerly of Bawden Street, Berserker. Passed away peacefully on Monday, 20th June 2022.

Aged 80 years.

Loved Mother, Grandmother,

Great-Grandmother, Sister and Aunt to their families.

Relatives and friends are respectfully invited to attend a Funeral Service for Dot to be held Graveside at North Rockhampton Cemetery on Wednesday, 29th June 2022 commencing at 10am.



FINLAYSON & McKENZIE (AFDA)  
56 William Street, Rockhampton  
Phone 4922 1269

12555886-H026-22

#### DOWRICK, Gordon Richard

Of North Rockhampton Nursing Centre and formerly of Hope Royal Kunwarara, Passed away peacefully on Tuesday, 21st June 2022

Aged 87 years.

Beloved Husband of Maureen.

Loved Father of Brian, Darren.

Grandfather and Great-Grandfather.

Relatives and friends are respectfully invited to attend a Celebration of Gordon's life to be held in the East Chapel of the Rockhampton Crematorium on Tuesday, 28th June 2022 commencing at 10am.



FINLAYSON & McKENZIE (AFDA)  
56 William Street, Rockhampton  
Phone 4922 1269

12555870-H026-22



#### GROSSE, Elsie Lilian (Lil)

Late of Alexandra Gardens formerly of Oakley Street, Wandal Passed away peacefully on Thursday 16th June 2022

Aged 89 years

Dearly loved Wife to Colin (dec).

Adored Mother and Mother-in-law to Colin (dec), Julie, Teresa, David and Lesley, Annette and Tony, Colleen.

Loved Grandmother to 18 grandchildren, Great-grandmother to 35 great-grandchildren.

Very much loved Sister, Sister-in-law and Aunt to her family.

Family and Friends are respectfully invited to attend a Funeral Mass for Lil to be held at Holy Family Church, 390 Feez Street, Norman Gardens on Monday 27th June 2022 commencing at 10 am.



FINLAYSON & McKENZIE (AFDA)  
56 William Street, Rockhampton  
Phone 4922 1269

12555869-DL26-22

### Funeral Services

#### KENNEDY, Alma Emily (nee Wooler)

17.12.1931 – 16.06.2022  
Late of Gladstone and formerly of Rockhampton.  
Passed away peacefully after a short battle with cancer.

Dearly loved Wife of Chick (dec.).

Mother and Mother-in-law of Kathleen & Des, Susan and Nep, Mark and Tracey, Rosemary and Henk, Greg and Fiona, Lawrie and Ash.

Grandmother to sixteen and Great Grandmother to ten.

She will be deeply missed and always in our hearts.

A Service will be held for Alma on Monday 27th June 2022, immediate family only.



FINLAYSON & McKENZIE (AFDA)  
56 William Street, Rockhampton  
Phone 4922 1269

12555776-DL26-22

#### MCCAMLEY, Audrey Joan

Of Harrow Street, Rockhampton. Passed away peacefully at the Mater Hospital Rockhampton on Sunday 19th June 2022.

Aged 85 years.

Beloved Wife of Harold (dec).

Daughter of Richard and Meta (both dec).

Much loved Mother of Ian, Gavin (dec).

A beloved Grandmother.

Sister to Lindsay (dec), Estelle (dec).

Relatives, Friends and Members of Horticultural Society, Meals on Wheels and Capricorn Information Centre are respectfully invited to attend a Funeral Service for Joan to be held at the East Chapel of the Rockhampton Crematorium on Tuesday 28th June 2022 commencing at 12 noon.



FINLAYSON & McKENZIE (AFDA)  
56 William Street, Rockhampton  
Phone 4922 1269

12555824-AV25-22

### Funeral Services

#### McMASTER, Loretta Joan (nee Hobbs)

Late of Western Street, West Rockhampton. Passed away peacefully on Wednesday 22 June 2022.

Aged 82 years.

Dearly Loved Wife of John.

Much Loved Mother and Mother-in-law of Rik (dec), Shari and Nick.

Relatives and friends are respectfully invited to attend a service to celebrate the life of Loretta to be held in the East Chapel, Rockhampton Crematorium this Thursday 30 June 2022, commencing at 2pm.



TUCKER & NANKIVELL  
FUNERAL & CREMATION DIRECTORS

125556265-DL26-22

#### ROMA, Alan Barry

Late of Brisbane, formerly of Rockhampton. Passed away peacefully on Monday 6 June 2022.

Aged 55 years.

Dear Loved Son of Jack Kemp and Elizabeth Corporal (both dec'd).

Loved Brother, Brother-in-law, Uncle and Cousin.

Relatives and Friends are respectfully invited to attend a service to celebrate the life of Alan to be held in the Rockhampton Baptist Tabernacle, Norman Road, North Rockhampton on Friday 1 July 2022, commencing at 11am.



TUCKER & NANKIVELL  
FUNERAL & CREMATION DIRECTORS

12555643-AV25-22

### In Memoriam

#### CHAFFEY Norman Peel

27.06.2016

Forever missed by his loving wife Maureen.



12553937-AV26-22

Place your  
Announcement  
Notice  
with us.



Phone:  
1300 666 808

sales@networkclassifieds.com.au

Rest in Peace



Place your  
Announcement  
Notice  
with us.

Phone: 1300 666 808  
sales@networkclassifieds.com.au